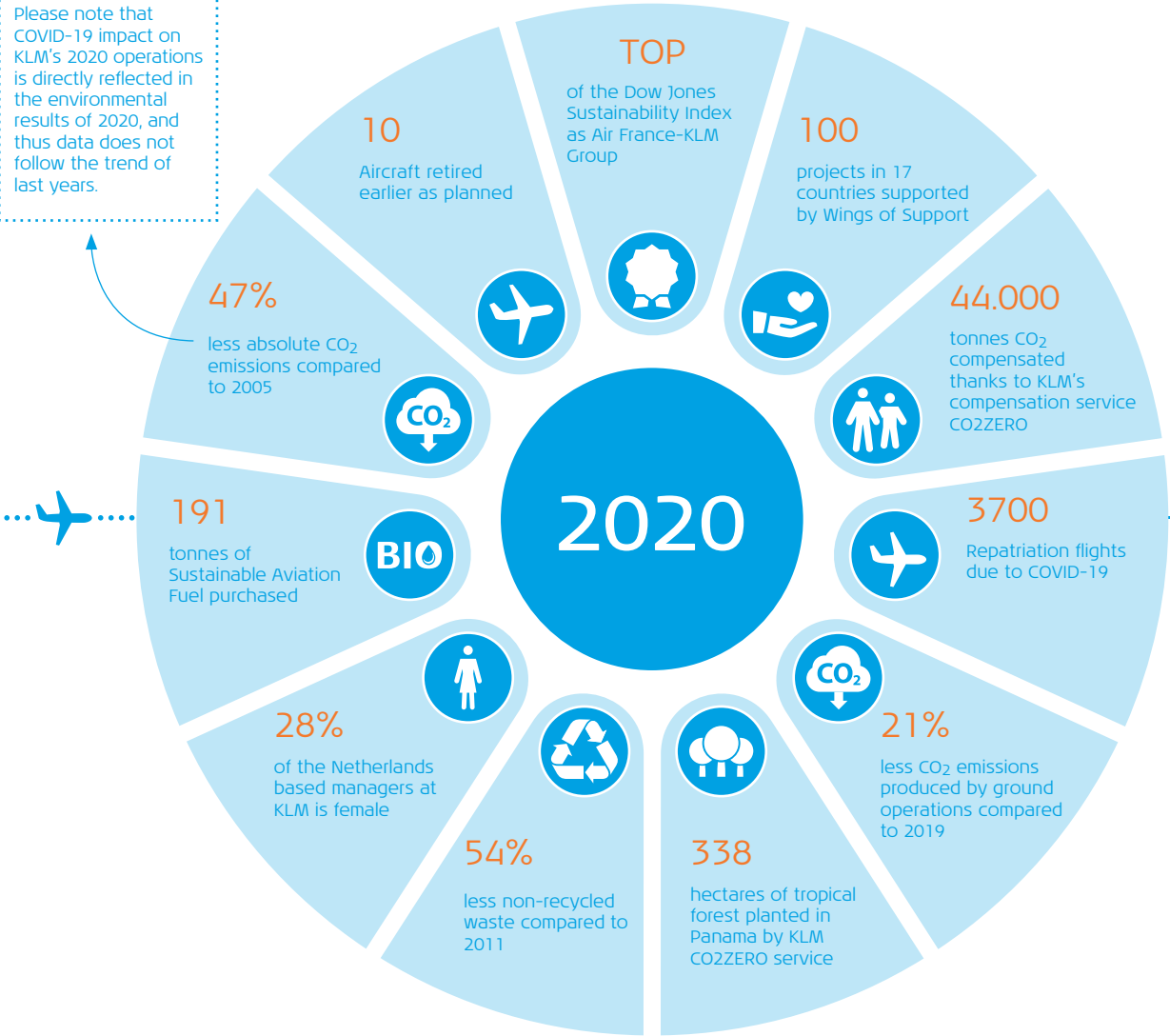


KLM Sustainability: 2020 at a glance

Please note that COVID-19 impact on KLM's 2020 operations is directly reflected in the environmental results of 2020, and thus data does not follow the trend of last years.



JAN
Lavazza part of Corporate SAF Programme

FEB
Blue Heart Days

MAR
Multiple initiatives KLM employees in community involvement

APR
Launch Air France-KLM Principles
Trial with hybrid towing vehicle

MAY
Economy class catering of EU fights all vegetarian
Green Recovery Statement

JUN
First flight of scale model Flying V

SEP
SAF Paper Clean Skies for Tomorrow Coalition

Fuelling Flight statement

OCT
Launch of Cargo SAF Programme

NOV

DEC